



**Electrolux**  
PROFESSIONAL

**Modular Preparation  
1200 mm Passthrough Ambient  
Unit with Sliding Doors**

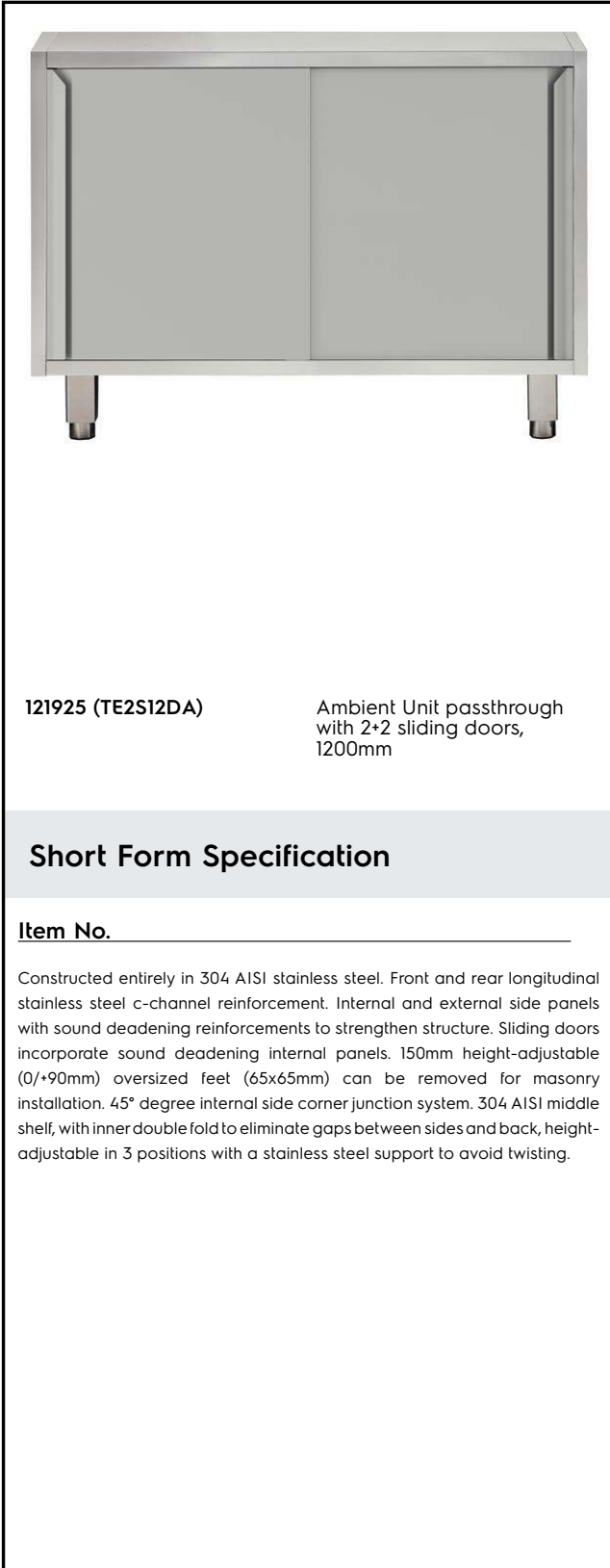
ITEM # \_\_\_\_\_

MODEL # \_\_\_\_\_

NAME # \_\_\_\_\_

SIS # \_\_\_\_\_

AIA # \_\_\_\_\_



121925 (TE2S12DA)

Ambient Unit passthrough  
with 2+2 sliding doors,  
1200mm

**Short Form Specification**

Item No. \_\_\_\_\_

Constructed entirely in 304 AISI stainless steel. Front and rear longitudinal stainless steel c-channel reinforcement. Internal and external side panels with sound deadening reinforcements to strengthen structure. Sliding doors incorporate sound deadening internal panels. 150mm height-adjustable (0/+90mm) oversized feet (65x65mm) can be removed for masonry installation. 45° degree internal side corner junction system. 304 AISI middle shelf, with inner double fold to eliminate gaps between sides and back, height-adjustable in 3 positions with a stainless steel support to avoid twisting.

**Main Features**

- Masonry installation possible by simply removing feet.
- Extremely easy to clean thanks to the smooth edges.

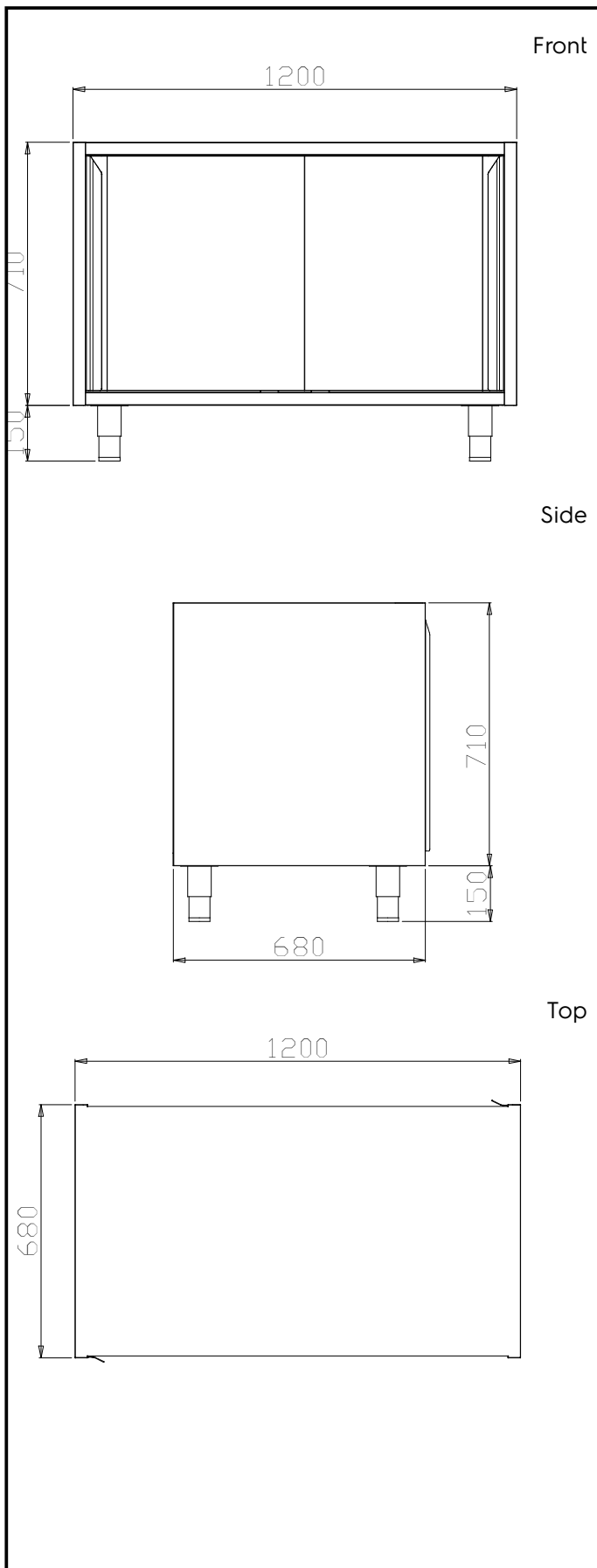
**Construction**

- Front and rear lengthwise stainless steel c-channel reinforcement, 15/10 (16 gauges).
- Sound deadening reinforcements between internal and external side panels to strengthen structure.
- Mounted on 150 mm height adjustable (0/+90 mm) oversized (65x65 mm) feet.
- Internal sides supporting the structure to have 45° degrees internal side corners junction system.
- 30 mm high middle-shelf in AISI 304 stainless steel, height-adjustable in 3 positions, with inner double fold to eliminate gaps between sides and back.
- Doors made in 304 AISI stainless steel with Scotch-Brite finishing.
- Sliding doors, with sound deadening internal and external panels, run on the upper part on the s/s bearings and on the lower part on a hidden runner. Doors are easy to remove thus facilitating cleaning procedures.

APPROVAL: \_\_\_\_\_



Experience the Excellence  
[www.electroluxprofessional.com](http://www.electroluxprofessional.com)



### Key Information:

<b>Cabinet width:</b>		
121925 (TE2S12DA)	1030 mm	
<b>Cabinet depth:</b>	580 mm	
<b>Cabinet height:</b>	645 mm	
<b>N° of doors:</b>	4	
<b>Door Type:</b>	Sliding	
<b>External dimensions, Width:</b>	1200 mm	
<b>External dimensions, Depth:</b>	680 mm	
<b>External dimensions, Height:</b>	860 mm	
<b>Net weight:</b>	95 kg	